

Community Connections for PALM Workers

May 2023



Community Connections



Who we are

The Salvation Army

Pacific Islands Council of
Queensland

Pacific Islands Council of South
Australia

Uniting Church in Australia
Synod of Victoria and Tasmania

NSW Council for Pacific
Communities



Uniting Church in Australia
SYNOD OF VICTORIA AND TASMANIA



NSW COUNCIL FOR
Pacific Communities



Pacific Islands Council Of
South Australia
equip, empower, engage



Our Goals

The change we expect to see from our activities:

Increased belonging and inclusion → decreased mistreatment and improved well-being

Through positive connection, we anticipate greater understanding and harmony between workers and their communities.

Goals

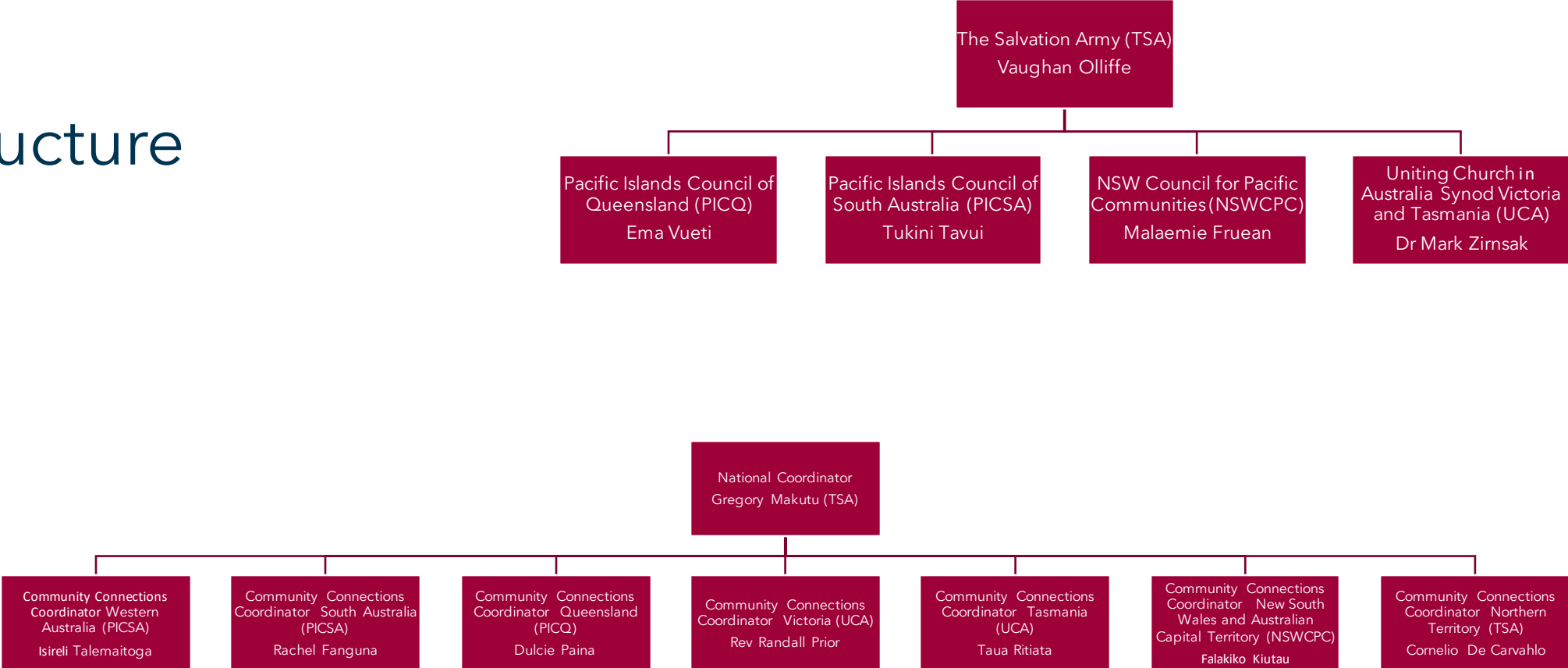
- To formalise and expand local connections for PALM workers;
- To enhance those connections by providing tools and resources to help communities reach and support workers.



Our Strategy

- Engaging with local community groups/individuals and the Timorese with Pacific diaspora to bring PALM workers and their local communities together through social, sporting, cultural events and religious services;
- Employing community assessment techniques to identify and connect with additional stakeholders to ensure workers' welfare and wellbeing is supported;
- Collaborating with specialists with cultural, linguistic and technical expertise to produce resources for enhanced cultural understanding between workers and their host communities.

Our Structure



Our Coordinators

Greg Makutu, TSA, National
Coordinator

Dulcie Paina, PICQ QLD, Solomon
Islands

Rev Randall Prior, UCA VIC,
(Vanuatu)

Rachel Fanguna, PICSA SA, Tonga

Isireli Talemaitoga, PICSA WA, Fiji

Falakiko Kiutau, NSWCP
NSW/ACT, Tonga

Taua Ritiata, UCA TAS, Kiribati

Cornelio De Carvahlo, TSA NT,
Timor-Leste



Contact

Community.Connections@salvationarmy.org.au



